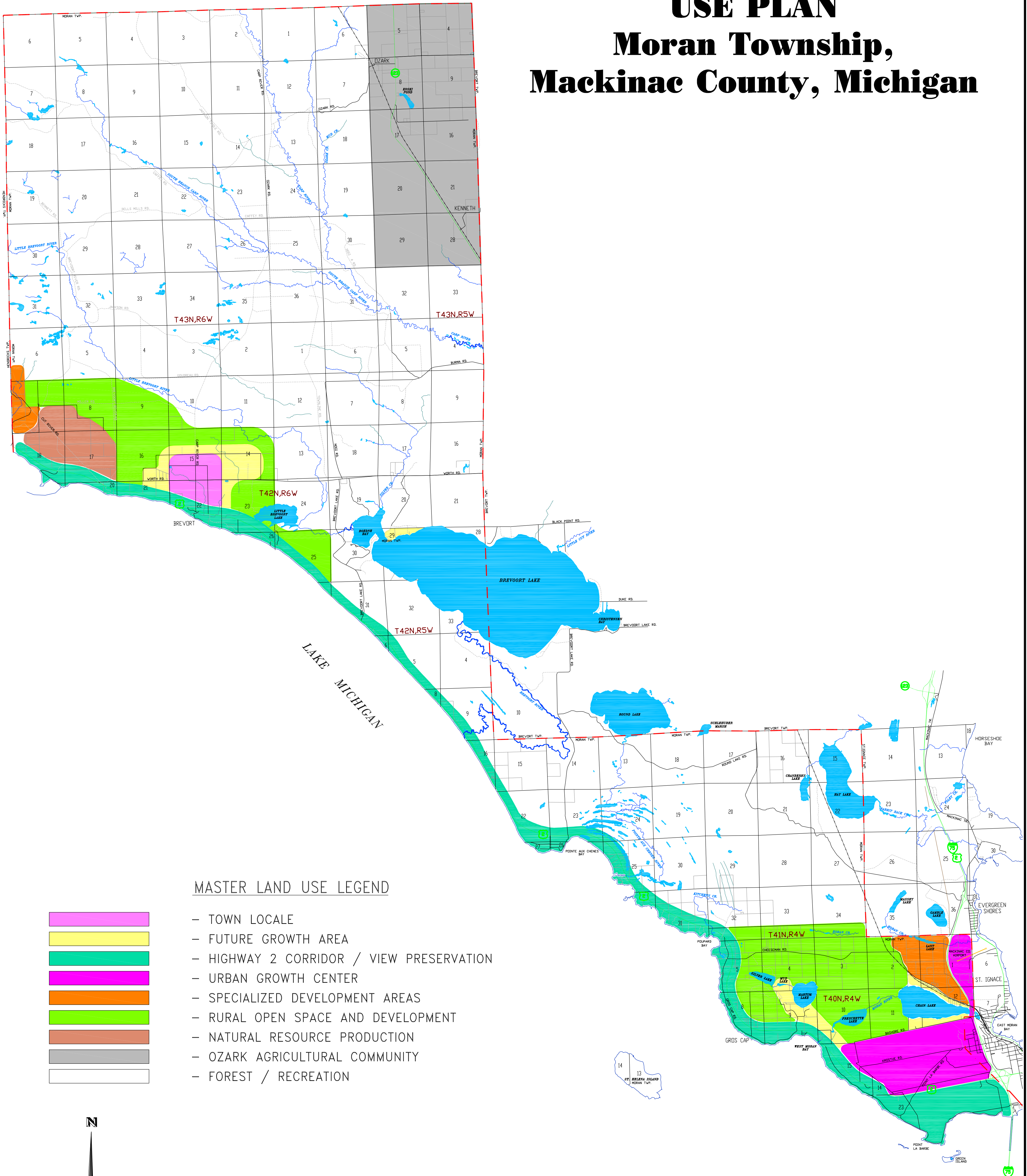


MASTER LAND USE PLAN

Moran Township, Mackinac County, Michigan

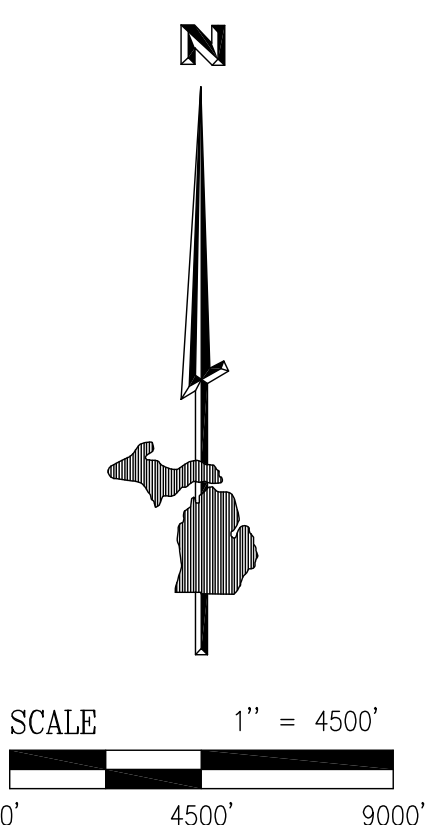


MASTER LAND USE LEGEND

- | | |
|--|--|
| | - TOWN LOCALE |
| | - FUTURE GROWTH AREA |
| | - HIGHWAY 2 CORRIDOR / VIEW PRESERVATION |
| | - URBAN GROWTH CENTER |
| | - SPECIALIZED DEVELOPMENT AREAS |
| | - RURAL OPEN SPACE AND DEVELOPMENT |
| | - NATURAL RESOURCE PRODUCTION |
| | - OZARK AGRICULTURAL COMMUNITY |
| | - FOREST / RECREATION |

GENERAL LEGEND

- | | |
|--|--------------------------|
| | LAKES |
| | CREEKS, STREAMS & RIVERS |
| | TWO TRACK ROADS |
| | PARCEL BOUNDARY LINES |
| | COUNTY ROADS |
| | STATE & FEDERAL HIGHWAY |
| | RAILROAD |
| | TOWNSHIP BOUNDARY |



SOURCE: MICHIGAN DEPARTMENT OF NATURAL RESOURCES
MIRIS CAD BASE DATA, 1992